



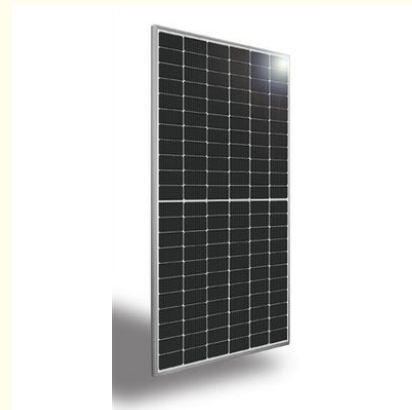
520W Monocrystalline Silicon Solar Panels Corrosion Resistant Aluminum Frame

Our Product Introduction

for more products please visit us on monosolarpanel.com

Basic Information

- Place of Origin: China
- Brand Name: Linksun
- Certification: CE、BSCI
- Model Number: LS-520M
- Minimum Order Quantity: 100PCS
- Packaging Details: 1pcs/carton
- Delivery Time: 5-8days
- Payment Terms: 30% TT in advance, 70% balance before delivery.
- Supply Ability: 1000pieces per week



Product Specification

- Dimensions: 2279*1134*5.5mm(89.72x44.64x0.22inches)
- Efficiency: 20.12%
- Minimum Order: 100pcs
- Power Tolerance: 0-+3%
- Protection Class: IP68 Rated
- Weight(kgs): 31.5kg
- Connector Type: MC4
- Cell Number: 144(6x24)(Half-Cell)
- Highlight: **520W Mono Crystalline Solar Panels,
520w Silicon Solar Panels,
Corrosion Resistant Aluminum Monocrystalline
Silicon Panels**

Product Description

Linksun Monocrystalline 520w Silicon Solar Panels With 25 Years Warranty

Our 520W monocrystalline silicon solar panels are designed for high efficiency and long-lasting performance. Utilizing advanced technology, these panels ensure optimal energy output and reliability. Built to withstand severe weather conditions, they are perfect for residential, commercial, and industrial applications. Backed by a 25-year warranty, these panels offer a sustainable and cost-effective energy solution, providing peace of mind and an excellent return on investment.

Product Features:

1)High Efficiency

High modules conversion efficiency. Grade A solar cell and IP68 Rated waterproof solar panel connectors. This solar panel has 5 year 95% output warranty, 10 year 90% output warranty, 25 year 80% output warranty.

2)Reliable and Durable

Corrosion-resistant aluminum frame provides extended outdoor use that ensures the panel can last for decades. The IP68 rated junction box and solar connectors can withstand dirt, dust, debris, and water splashes.

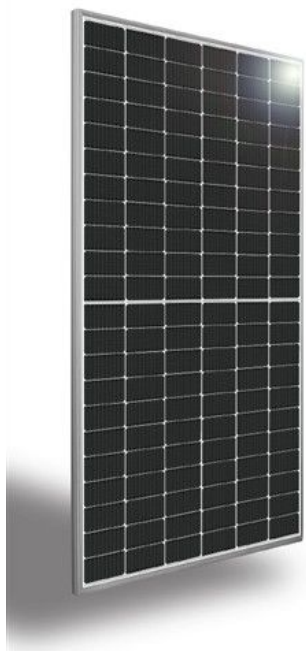
3)High Tolerance

It can tolerate any part of the battery's shading, and performs well in low light conditions due to an increase in the number of batteries receiving more sunlight.

Product Details:

Model	LS-D520M
Maximum Power(Pmax)	520W
Maximum Power Voltage(Vmp)	41.02V
Maximum Power Current(Imp)	12.68A
Open Circuit Voltage(Voc)	48.94V
Short Circuit Current(Isc)	13.53A
Power Tolerance(Positive)	3%
Cell Type	Mono-crystalline PERC,182x91mm
Product Dimension(mm)	2279*1134*5.5mm(89.72x44.64x0.22inches)
Weight(KGS)	31.5kg
Protection Class	IP68 rated
Maximum System Voltage	DC 1500V
Temperature Range	-40 ~85
Module Efficiency STC	20.12%
Cell number	144(6x24)(Half-Cell)
Front Glass	(F)2.0mm ultra clear embossed double layer colorless glass (B)2.0mm semi-tempered glass
Connector Type	MC4
Output Cables	4.0 mm ² (0.006 inches ²),Length:1300mm

Temperature Characteristics		Packing Configuration	
Temp.Coeff.of Isc(TK Isc)	0.048%/	Container	40'HQ
Temp.Coeff.of Voc(TK Voc)	-0.27%/	Pieces per pallet	72
Temp.Coeff.of Pmax(TK Pmax)	-0.34%/	Pallets per container	10
Normal operating cell Temperature	44±2	Pieces per container	720

**FAQ:**

Q1:What's the solar panels warranty?

A: 5 year's warranty.If you have any questions about our quality during use,you can contact us at any time.

Q2:Do you accept OEM/ODM orders?

A:We accept OEM/ODM orders.Welcome your inquiry.

Q3:Can I have samples to test?and what's the lead time for the sample order?

A:Yes,of course.The lead time for samples is 7-10 days.

Q4:Are you manufacturer or a trading company?

A:We are manufacturer and our factory is based in Yuyao,Ningbo.Welcome your visit if you like.

Q5:Where are your goods exported?

A:We can export to all over the world.



Ningbo Linksun Energy Science & Technology Co., LTD



+8615888168085



sales02@zjlinksun.com



monosolarpanel.com

2nd ,Floor,No.1 Building,Wanyang Entrepreneurial City,Yuyao,Zhejiang Province, China