



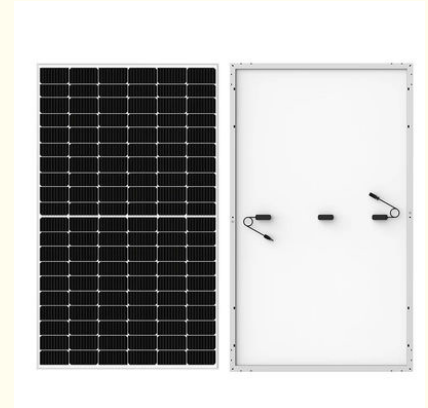
455w Frameless Solar Panel M10 TOPCON Bifacial Dual Glass for large public buildings

Our Product Introduction

for more products please visit us on monosolarpanel.com

Basic Information

- Place of Origin: China
- Brand Name: Linksun
- Certification: CE
- Model Number: LS-D455M
- Minimum Order Quantity: 100PCS
- Packaging Details: 1pcs/carton
- Delivery Time: 5-8days
- Payment Terms: 30% TT in advance, 70% balance before delivery.
- Supply Ability: 1000pieces per week



Product Specification

- Connector: MC4
- Efficiency: 21.01%
- Frame: Frameless
- Junction Box: IP68 Rated
- Material: Monocrystalline
- Max Power: 455W
- Product Name: 455W Frameless Solar Panel
- Service Life: 25 Years
- Size: 1910*1134*5.5mm(75.20x44.65x0.22 Inches)
- Warranty: 25 Years
- Highlight: **455w Frameless Solar Panel, Frameless Solar Panel M10 TOPCON, 455 watt bifacial dual glass**

Product Description

Linksun Mono Bi-facial 455w Double glass,frameless M10 TOPCON for large public buildings

The Mono Bi-facial 455W Double Glass, Frameless M10 TOPCON solar panel is perfect for large public buildings. With its advanced bifacial design, it captures sunlight from both sides, boosting energy output. The double glass and frameless construction ensure durability and longevity. M10 TOPCON technology provides high efficiency and reliability. This panel offers a sleek, modern appearance, making it an excellent choice for maximizing energy production and sustainability in public installations.

Product Features:

1)High aesthetics

The overall frameless design of the double glass frameless photovoltaic module is more aesthetically pleasing and can be integrated into the exterior of the building.

2)Good weather resistance and reliability

Adopting a double glass design can effectively improve the weather resistance and reliability of the component, and extend its service life.

3)More convenient installation

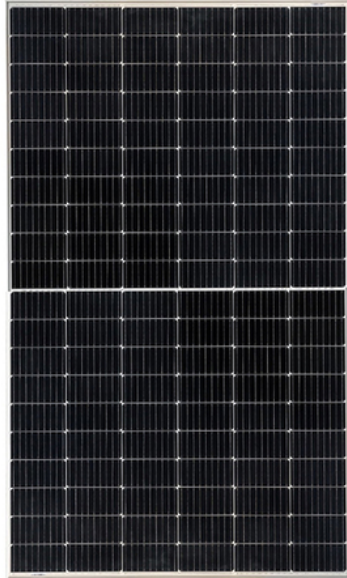
Due to the borderless design, installation is more convenient and fast, reducing installation costs and labor hours.

4)Higher power generation efficiency

By adopting more advanced production processes and materials, the photoelectric conversion efficiency is improved, resulting in higher power generation compared to traditional components.

Product Details:

Model	LS-D455M
Maximum Power(Pmax)	455W
Maximum Power Voltage(Vmp)	31.94V
Maximum Power Current(Imp)	13.62A
Open Circuit Voltage(Voc)	38.43V
Short Circuit Current(Isc)	14.34A
Power Tolerance(Positive)	3%
Cell Type	N type Mono-crystalline ,182x91mm
Product Dimension(mm)	1722*1134*5.5mm(67.80x44.65x0.22 inches)
Weight(KGS)	23kg
Protection Class	IP68 rated
Maximum System Voltage	DC 1500V
Operating Temperature Range	-40 ~85
Module Efficiency STC	22.28%
Cell number	108(6x18)(Half-Cell)
Front Glass	(F)2.0mm ultra clear embossed double layer colorless glass (B)2.0mm black mesh glazed tempered glass
Connector Type	MC4
Output Cables	4.0 mm ² (0.006 inches ²),Length:1100mm



455w 31.94V Frameless Solar Panel 455 Watt Bifacial Panel Solar 1

FAQ:

Q1:What's the solar panels warranty?

A: 5 year's warranty.If you have any questions about our quality during use,you can contact us at any time.

Q2:Do you accept OEM/ODM orders?

A:We accept OEM/ODM orders.Welcome your inquiry.

Q3:Can I have samples to test?and what's the lead time for the sample order?

A:Yes,of course.The lead time for samples is 7-10 days.

Q4:Are you manufacturer or a trading company?

A:We are manufacturer and our factory is based in Yuyao,Ningbo.Welcome your visit if you like.

Q5:Where are your goods exported?

A:We can export to all over the world.



Ningbo Linksun Energy Science & Technology Co., LTD



+8615888168085



sales02@zjlinksun.com



monosolarpanel.com

2nd ,Floor,No.1 Building,Wanyang Entrepreneurial City,Yuyao,Zhejiang Province, China