



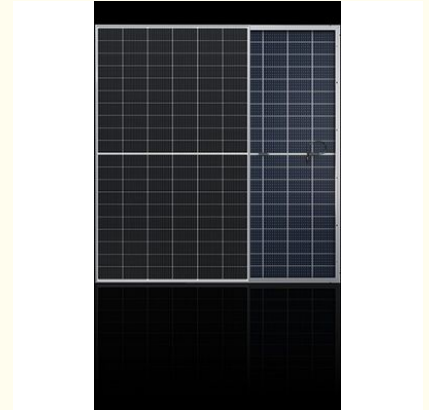
390 Watt 30.41V Bifacial Solar Panels 390W Mono Perc Bifacial Panel 108 Cells

Our Product Introduction

for more products please visit us on monosolarpanel.com

Basic Information

- Place of Origin: China
- Brand Name: Linksun
- Certification: CE
- Model Number: LS-390M
- Minimum Order Quantity: 100PCS
- Packaging Details: 1pcs/carton
- Delivery Time: 5-8days
- Payment Terms: 30% TT in advance, 70% balance before delivery.
- Supply Ability: 1000pieces per week



Product Specification

- Cell Type: Mono-crystalline PERC, 182x91mm
- Connector Type: MC4
- Dimension: 1722*1134*30mm (67.79x44.64x1.18 Inches)
- Efficiency: 19.95%
- Frame: Black, Anodized Aluminum Alloy
- Junction Box: IP68 Rated
- Maximum System Voltage: DC 1500V
- Temperature Range: -40°C~+85°C
- Type: Bifacial Solar Panels
- Warranty: 25 Years
- Weight: 25.5kg
- Highlight: **390 watt Bifacial Solar Panels,
30.41V Bifacial Solar Panels 108 cells,
390W mono perc bifacial panel**

Product Description

390 Watt 30.41V Bifacial Solar Panels 390W Mono Perc Bifacial Panel 108 Cells

The 390 Watt Bifacial Solar Panels feature 108 Mono PERC cells and operate at 30.41V, delivering high efficiency and performance. Designed to capture sunlight from both sides, these panels significantly boost energy output. Ideal for residential, commercial, and industrial applications, they maximize power generation by utilizing reflected light. Their robust construction ensures durability and long-term reliability. With advanced bifacial technology and a sleek design, these panels provide an excellent solution for sustainable energy needs, helping to reduce electricity costs and support environmental sustainability.

Product Features:

1)Higher efficiency

With the ability of capturing sunlight from both sides,our product of bifacial solar panel can provide up to 21,96% more efficient compared with the common solar panel.

2)Easy to install and use

The pre-drilled holes on the back of the panel make it quick to mount on the roof or other situation.

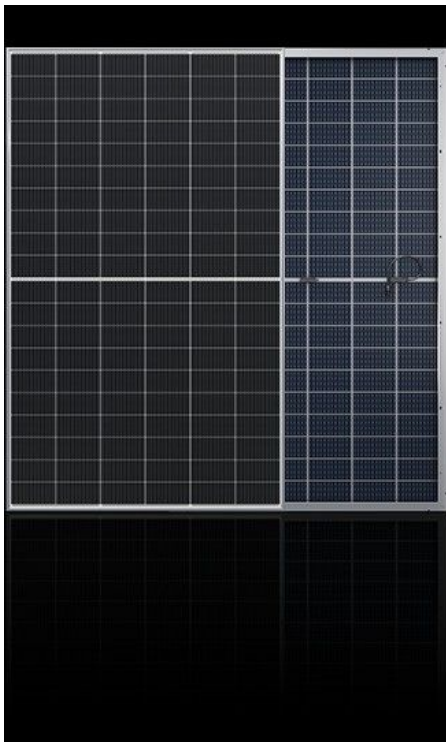
3)Advanced Technology

As one of the most efficient solar technologies in the industry,HJT technology can make products less affected by changes in temperature. Bifacial products pass more sunlight up to 95%.

Product Details:

Model	LS-390M
Maximum Power(Pmax)	390W
Maximum Power Voltage(Vmp)	30.41V
Maximum Power Current(Imp)	12.83A
Open Circuit Voltage(Voc)	36.53V
Short Circuit Current(Isc)	13.62A
Power Tolerance(Positive)	3%
Cell Type	Mono-crystalline PERC,182x91mm
Product Dimension(mm)	1722*1134*30mm(67.79x44.64x1.18 inches)
Weight(KGS)	25.5kg
Protection Class	IP68 rated
Maximum System Voltage	DC 1500V
Operating Temperature Range	-40 ~85
Module Efficiency STC	19.95%
Cell number	108(6x18)(Half-Cell)
Front Glass	(F)2.0mm ultra clear embossed semi-tempered coated glass (B)2.0mm semi-tempered glass
Frame Type	Black,Anodized Aluminum Alloy
Connector Type	MC4
Output Cables	4.0 mm ² (0.006 inches ²),Length:1100mm

Temperature Characteristics		Packing Configuration	
Temp.Coeff.of Isc(TK Isc)	0.048%/	Container	40'HQ
Temp.Coeff.of Voc(TK Voc)	-0.27%/	Pieces per pallet	72
Temp.Coeff.of Pmax(TK Pmax)	-0.34%/	Pallets per container	13
Normal operating cell Temperature	44±2	Pieces per container	936

**FAQ:**

Q1:What's the solar panels warranty?

A: 5 year's warranty.If you have any questions about our quality during use,you can contact us at any time.

Q2:Do you accept OEM/ODM orders?

A:We accept OEM/ODM orders.Welcome your inquiry.

Q3:Can I have samples to test?and what's the lead time for the sample order?

A:Yes,of course.The lead time for samples is 7-10 days.

Q4:Are you manufacturer or a trading company?

A:We are manufacturer and our factory is based in Yuyao,Ningbo.Welcome your visit if you like.

Q5:Where are your goods exported?

A:We can export to all over the world.



Ningbo Linksun Energy Science & Technology Co., LTD



+8615888168085



sales02@zjlinksun.com



monosolarpanel.com

2nd ,Floor,No.1 Building,Wanyang Entrepreneurial City,Yuyao,Zhejiang Province, China