



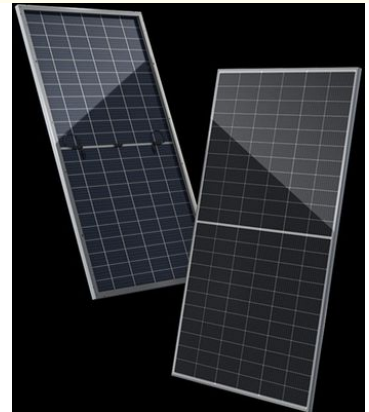
380 Watt 10.50A Bifacial Solar Panels 380W Solar Panel Black Frame

Our Product Introduction

for more products please visit us on monosolarpanel.com

Basic Information

- Place of Origin: China
- Brand Name: Linksun
- Certification: CE
- Model Number: LS-D380M
- Minimum Order Quantity: 100PCS
- Packaging Details: 1pcs/carton
- Delivery Time: 5-8days
- Payment Terms: 30% TT in advance, 70% balance before delivery.
- Supply Ability: 1000pieces per week



Product Specification

- Cell Type: Mono-crystalline Bifacial HJT, 166x83mm
- Connector: MC4
- Efficiency: 20.86%
- Frame: Black, Anodized Aluminum Alloy
- Junction Box: IP68 Rated
- Max Power: 380W
- Size: 1755*1038*30mm (69.09x40.87x1.18 Inches)
- Type: Bifacial Solar Panels
- Warranty: 25 Years
- Weight: 23.5kg
- Highlight: **380 watt Bifacial Solar Panels,
10.50A Bifacial Solar Panels,
380W solar panel black frame**

Product Description

380 Watt 10.50A Bifacial Solar Panels 380W Solar Panel Black Frame

The 380 Watt Bifacial Solar Panels, featuring a sophisticated black frame, are designed for superior energy efficiency with a current of 10.50A. These panels capture sunlight from both sides, significantly increasing power output and performance. Ideal for various applications, they enhance energy production by utilizing reflected light. Durable and reliable, they are suitable for residential, commercial, and industrial installations, ensuring long-term savings and sustainability. With advanced technology and robust construction, these panels are an excellent choice for maximizing energy efficiency and reducing electricity costs.

Product Features:

1)Higher efficiency

With the ability of capturing sunlight from both sides,our product of bifacial solar panel can provide up to 21,96% more efficient compared with the common solar panel.

2)Easy to install and use

The pre-drilled holes on the back of the panel make it quick to mount on the roof or other situation.

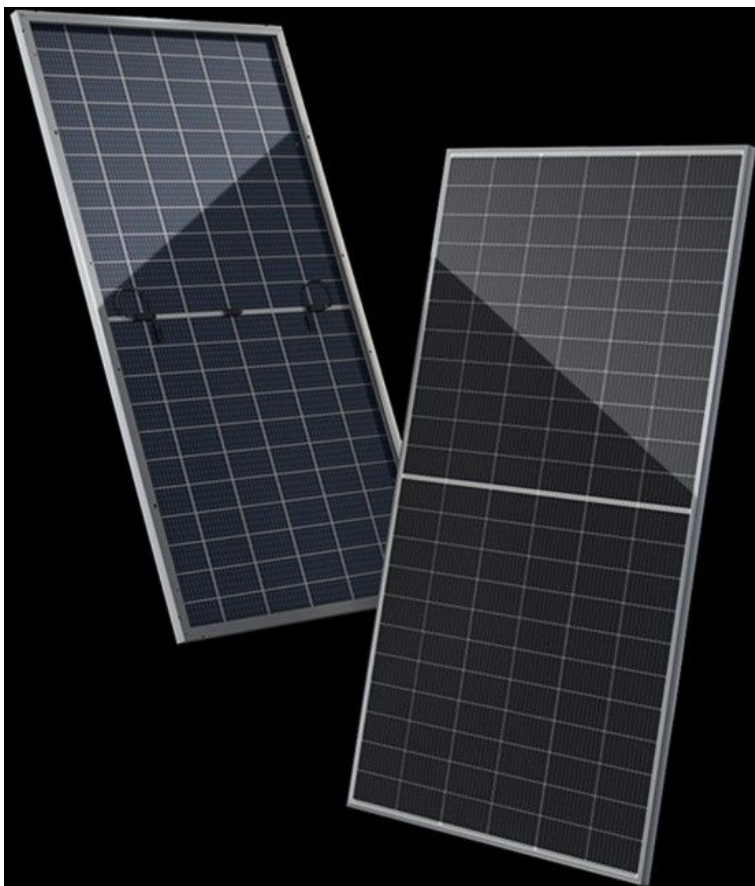
3)Advanced Technology

As one of the most efficient solar technologies in the industry,HJT technology can make products less affected by changes in temperature. Bifacial products pass more sunlight up to 95%.

Product Details:

Model	LS-D380M
Maximum Power(Pmax)	380W
Maximum Power Voltage(Vmp)	37.52V
Maximum Power Current(Imp)	10.14A
Open Circuit Voltage(Voc)	44.22V
Short Circuit Current(Isc)	10.50A
Power Tolerance(Positive)	3%
Cell Type	Mono-crystalline Bifacial HJT,166x83mm
Product Dimension(mm)	1755*1038*30mm(69.09x40.87x1.18 inches)
Weight(KGS)	23.5kg
Protection Class	IP68 rated
Maximum System Voltage	DC 1500V
Operating Temperature Range	-40 ~85
Module Efficiency STC	20.86%
Cell number	120(6x20)(Half-Cell)
Front Glass	(F)2.0mm ultra clear embossed semi-tempered coated glass (B)2.0mm semi-tempered glass
Frame Type	Black,Anodized Aluminum Alloy
Connector Type	MC4
Output Cables	4.0 mm ² (0.006 inches ²),Length:1100mm

Temperature Characteristics		Packing Configuration	
Temp.Coeff.of Isc(TK Isc)	0.04%/	Container	40'HQ
Temp.Coeff.of Voc(TK Voc)	-0.24%/	Pieces per pallet	72
Temp.Coeff.of Pmax(TK Pmax)	-0.2%/	Pallets per container	13
Normal operating cell Temperature	44±2	Pieces per container	936

**FAQ:**

Q1:What's the solar panels warranty?

A: 5 year's warranty.If you have any questions about our quality during use,you can contact us at any time.

Q2:Do you accept OEM/ODM orders?

A:We accept OEM/ODM orders.Welcome your inquiry.

Q3:Can I have samples to test?and what's the lead time for the sample order?

A:Yes,of course.The lead time for samples is 7-10 days.

Q4:Are you manufacturer or a trading company?

A:We are manufacturer and our factory is based in Yuyao,Ningbo.Welcome your visit if you like.

Q5:Where are your goods exported?

A:We can export to all over the world.



Ningbo Linksun Energy Science & Technology Co., LTD



+8615888168085



sales02@zjlinksun.com



monosolarpanel.com

2nd ,Floor,No.1 Building,Wanyang Entrepreneurial City,Yuyao,Zhejiang Province, China